



# Feature Updates

May 02, 2024

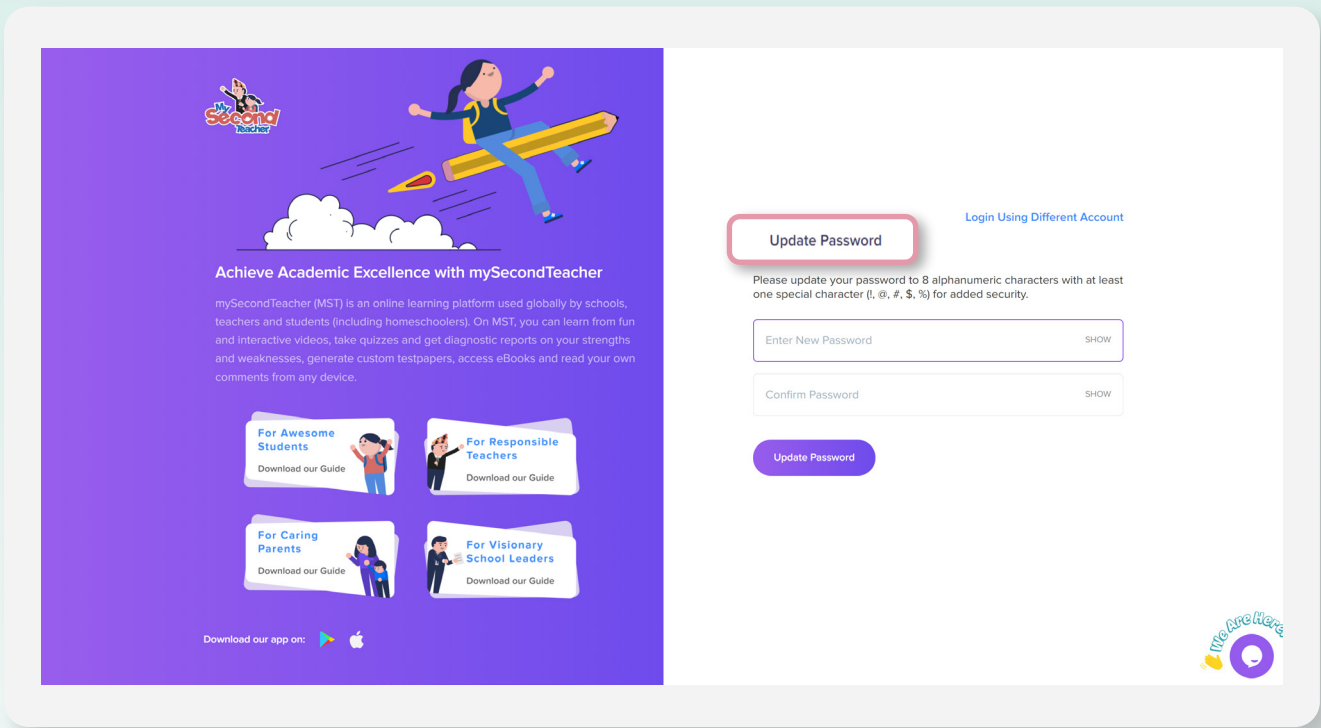


# Feature Release



## Password :

With the latest update, all users will be reminded to update their password at regular intervals (every 3 to 6 months). This will help make your account secure.

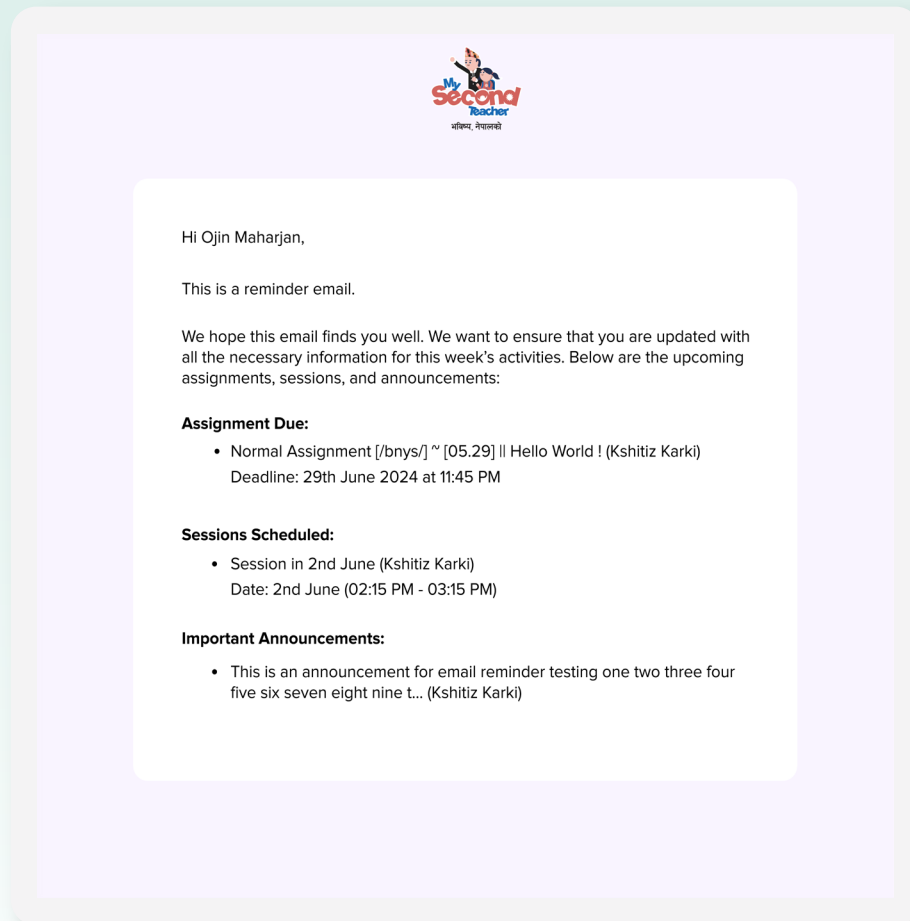


## Feature Release



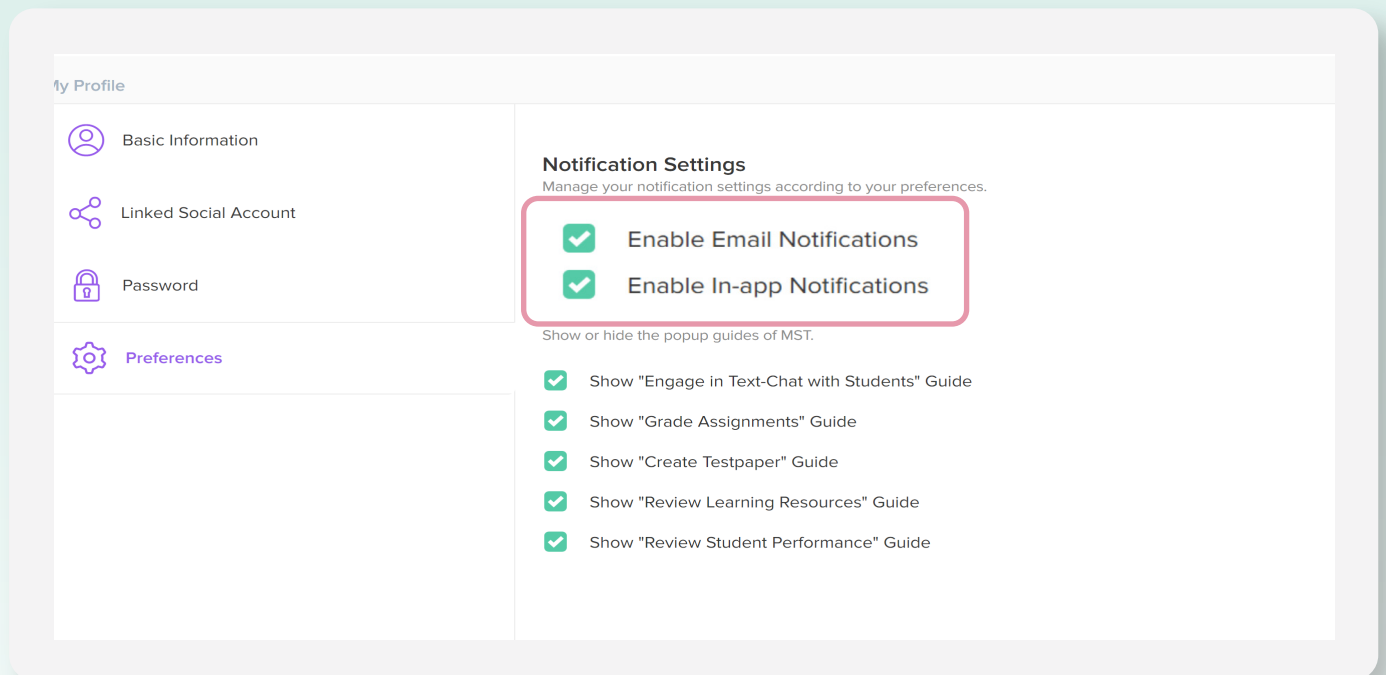
### Weekly email for upcoming assignments, sessions, and announcements:

With the most recent update, users will receive weekly emails with information on upcoming sessions, assignments due, and announcements.



## Email and In-app notification :

Following the latest update, both teachers and students can now enable and disable email and in-app notifications as per their choice.

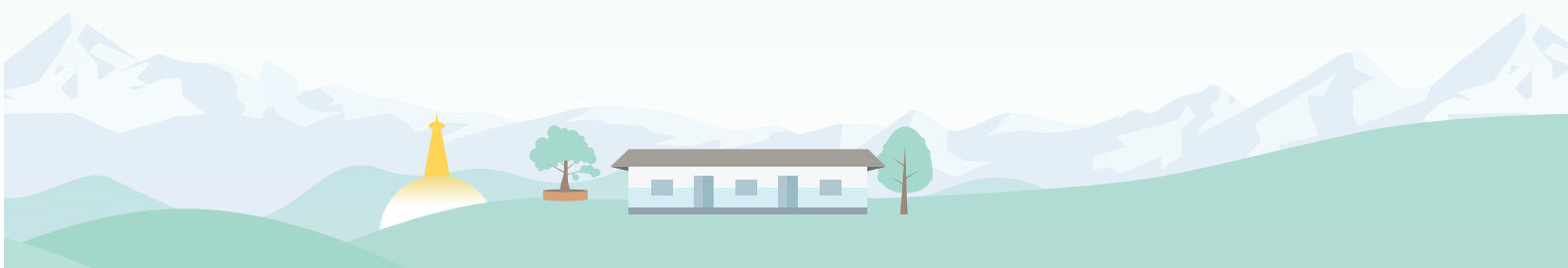
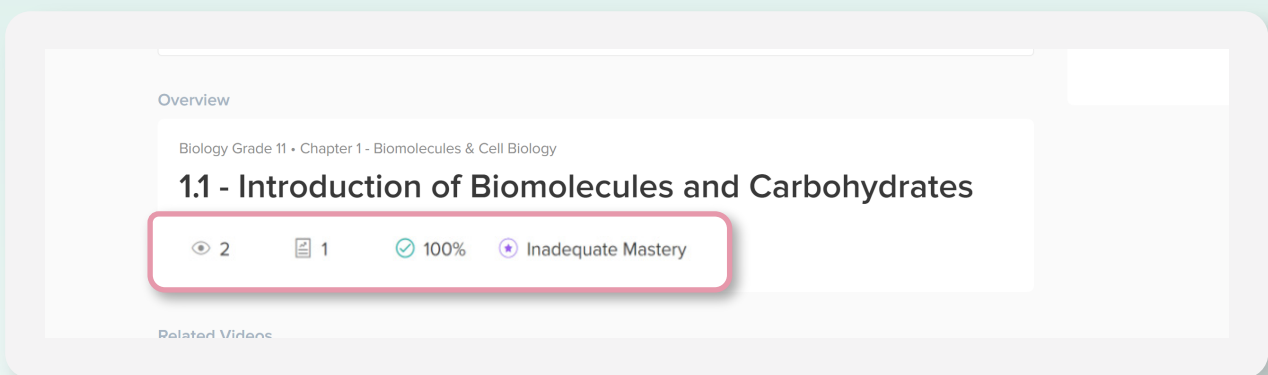


## Feature Release




### View count and Report count :


Following the most recent update, all IVY videos will have a separate view and report count. The IVY video view count is based on the number of videos watched. To increase the view count, the user must watch the video for more than 5 seconds. And the report count is based on the number of reports generated.




## Teaching resources mode change

Following the latest update, teachers can now change the mode between Teaching Mode and Self-assess Mode. In self-assess mode teachers can attempt End Lesson Quiz and obtain the diagnostic report. Teachers can watch and assign IVYs as assignments in Teaching mode.

 **Select Mode** step 3

 **Teaching Mode**

You can watch and assign videos to students in this mode.

 **Self-Assess Mode**

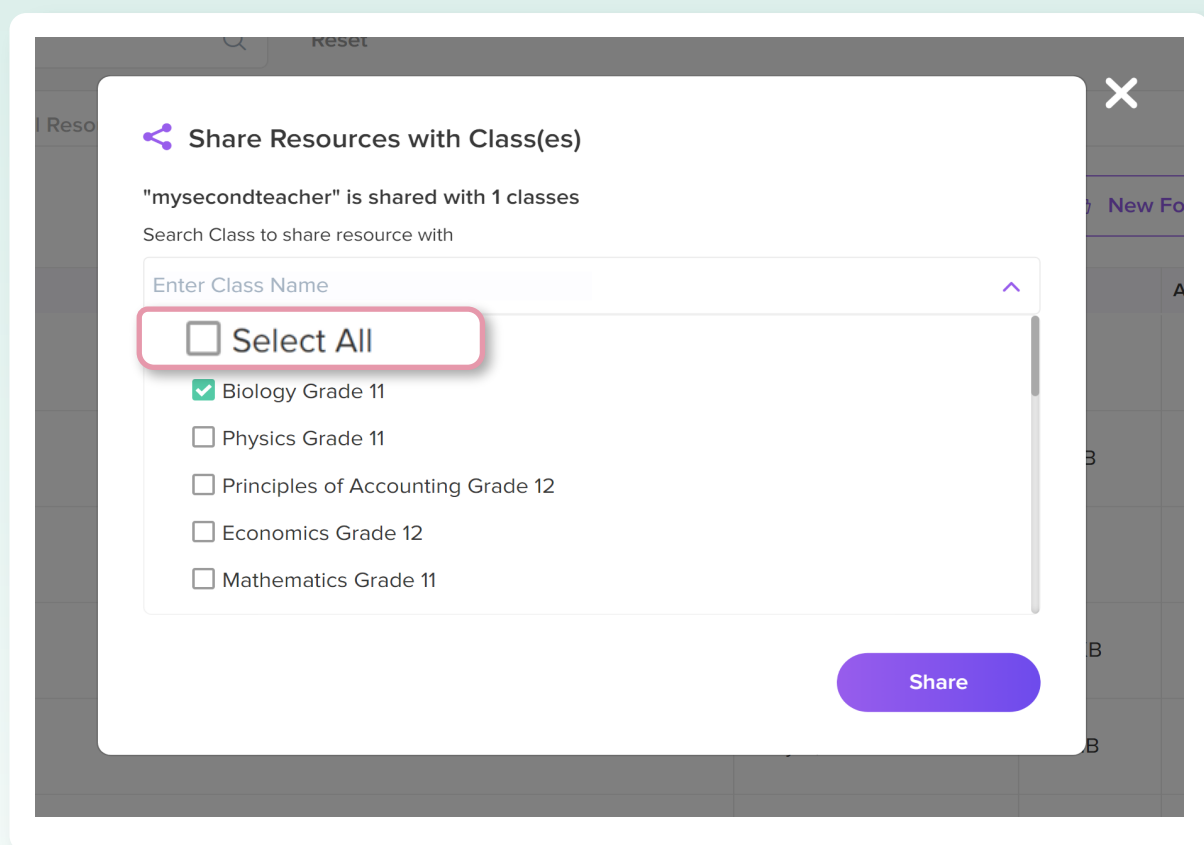
You can attempt end-of-lesson quizzes and obtain diagnostic reports in this mode.

[Save Mode](#)



## “Select All” feature in Teaching Resources

Following the latest update, teachers can now select all classes they are assigned while sharing resources.



## Feature Release



**Teachers can view shared resources of other teachers that are assigned to the same subject.**

Following the latest update, teachers can view the shared resources of other teachers that are assigned to the same class.

